

Fitting guide

Audi 6 disc CD changer

Written by Lee Johnson (Shezlee)



Tools required

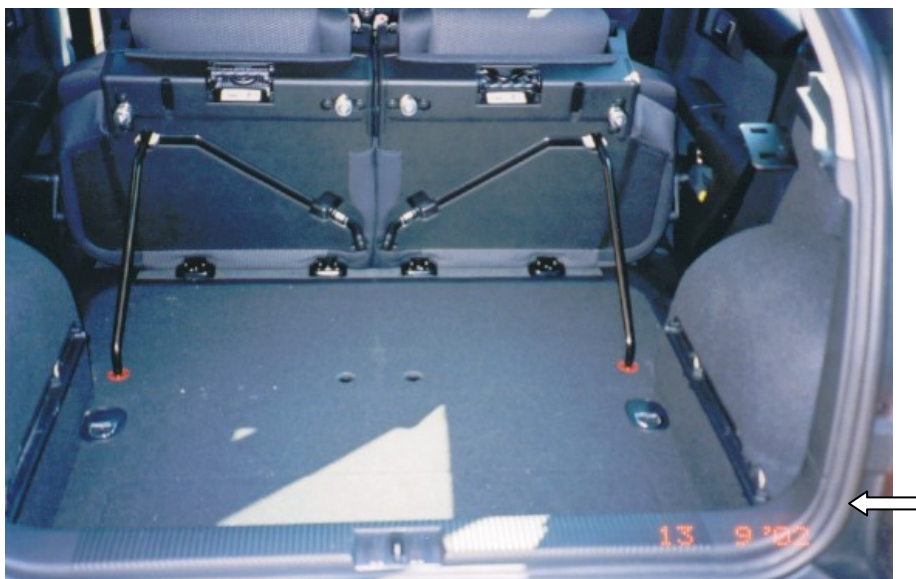
- Large flat blade screwdriver
- Large cross head screwdriver
- 10mm socket
- Audi Head Unit extraction Keys
- T-45 security bit

Part numbers

- 8N8 057 111 A – CD Changer
- 8Zo 051 113 – CD Changer bracket
- Number depends on spec and build date of A2 – Rear Internal Lining (Black)
- Asked for when ordering CD changer - CD Changer Cable

Instructions

- 1) Standard SE spec boot. Photo below.



- 2) Remove rear seat(s).

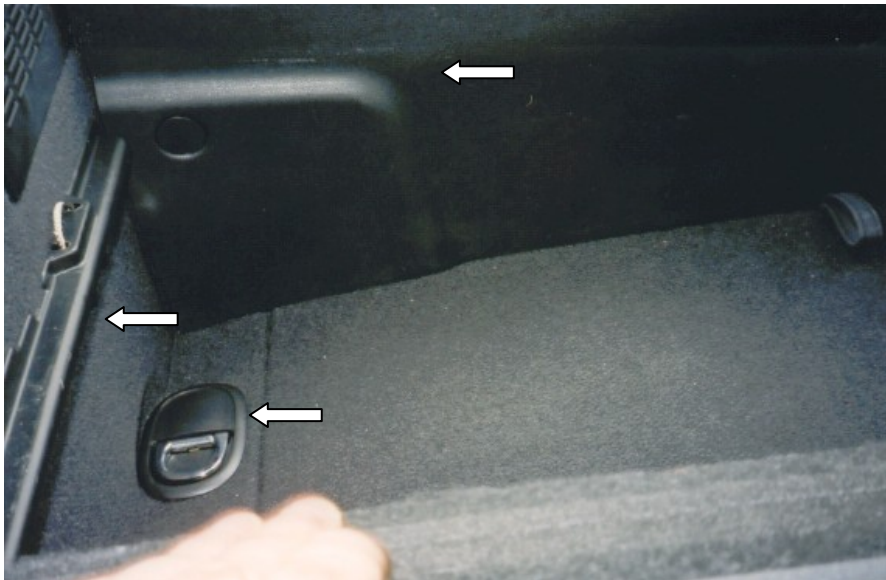
Fitting guide

Audi 6 disc CD changer

Written by Lee Johnson (Shezlee)



- 3) Remove boot rubber seal. Photo above.
- 4) Remove panel directly below lock. Photo below.
- 5) Remove false floor bracket (SE spec). Photo below.
- 6) Remove the load tie down points (2 in no) on the drivers side (large security bit needed). Photo below.
- 7) Remove retractable boot cover (also remove screw) not shown.



- 8) Remove rear drivers door rubber seal. Photo below.



Fitting guide

Audi 6 disc CD changer

Written by Lee Johnson (Shezlee)



- 9) Gently prise the lining from the rear panel (clip 1 down by rear lights) white square left of photo below.
- 10) Clip 2 is by the seatbelt mounting (will need small hands for this one) white square middle left of photo below.
- 11) Clip 3 is located behind the seat upright locking position (quite fiddly) white square right of photo below.
- 12) The last clip is around the seatbelt hole in the panel use a flat screwdriver a gently remove to the right of clip 3.



Fitting guide

Audi 6 disc CD changer

Written by Lee Johnson (Shezlee)



International **Audi A2** Owners Club

- 13) There are a two small push clips on the forward lower part of the panel pull the panels apart the 2 white discs. Photo below.



Fitting guide

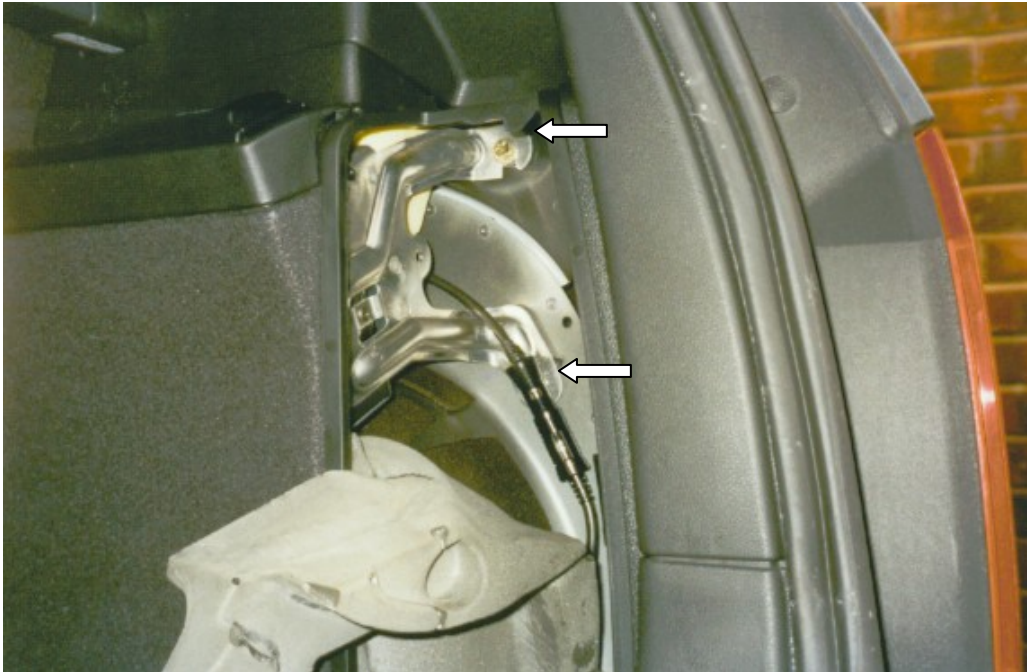
Audi 6 disc CD changer

Written by Lee Johnson (Shezlee)



BRACKET

- 14) You will need to obtain 4 bolts, which are longer than those supplied but having the same thread!!
- 15) Position fixing studs in body panels, align bracket, hold firmly in place and fit and tighten new bolts (don't over tighten as you can't remove them again) insert CD changer and screw as directed. Photo below.



Fitting guide

Audi 6 disc CD changer

Written by Lee Johnson (Shezlee)



CABLE

16) Rear driver's door rubber seal already removed. Photo below.



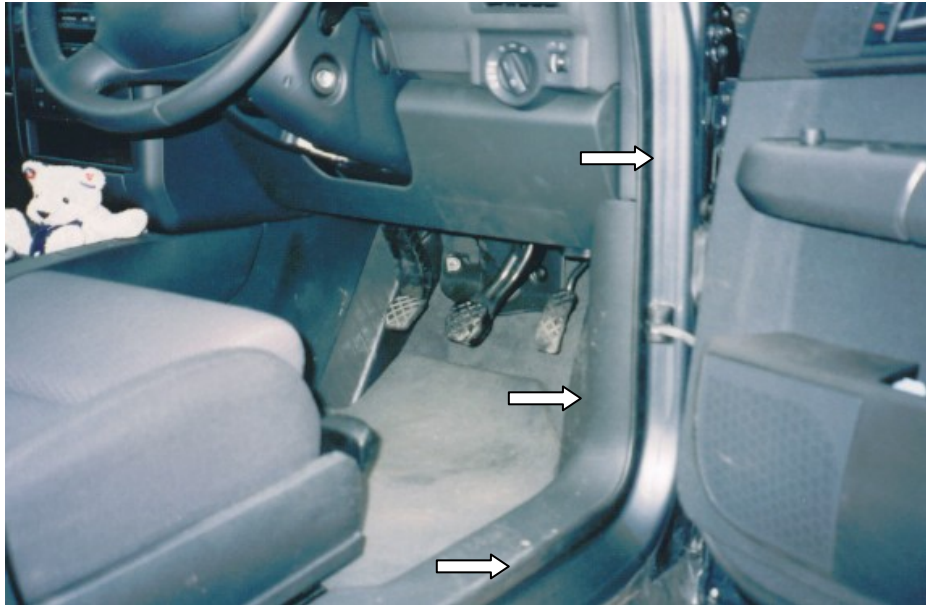
Fitting guide

Audi 6 disc CD changer

Written by Lee Johnson (Shezlee)



17) Remove drivers' door rubber seal. Photo below.



18) Lift plastic kick trim in both the front/rear driver's side foot-wells. Photos above.

19) Starting at the driver door run cable through the centre upright and around the rear wheel arch and connect to the CD changer (see bracket photo), run the cable forward to the kick panel next to the GAS pedal, run the cable up and across the lower side of the dashboard (its hard to see), at this point you need to remove the head unit using the correct tools (borrow them from Audi – They won't let you take them away). Feed the cable up and into the void behind the head unit.

20) Any excess cable coil up and place behind the kick panel next to the GAS pedal. Photo above.

21) Connect wires as directed. DO NOT USE THE CONNECTION BLOCK SUPPLIED. Use the existing one fitted to the head unit.

22) Test the unit and if all OK replace all removed parts remembering to fit the NEW lining.

Fitting guide

Audi 6 disc CD changer

Written by Lee Johnson (Shezlee)



International Audi A2 Owners Club

23) Fitting is quite simple it took me most of the day but I didn't know how everything fitted together so was being very careful.

