

## Removing and installing fuel pressure regulator and fuel metering valve

### 1 - Fuel metering valve -N290-

### 2 - Connector

- ☐ Black, 2-pin

### 3 - T-piece

### 4 - Fuel supply line

- ☐ From fuel tank
- ☐ Secure with spring-type clips
- ☐ Check that it is securely seated

### 5 - Fuel supply line

- ☐ To metal fuel line
- ☐ Secure with spring-type clips
- ☐ Check that it is securely seated

### 6 - Fuel return line

- ☐ From fuel pressure regulating valve -N276-
- ☐ Secure with spring-type clips
- ☐ Check that it is securely seated
- ☐ Blue marking

### 7 - Circlip

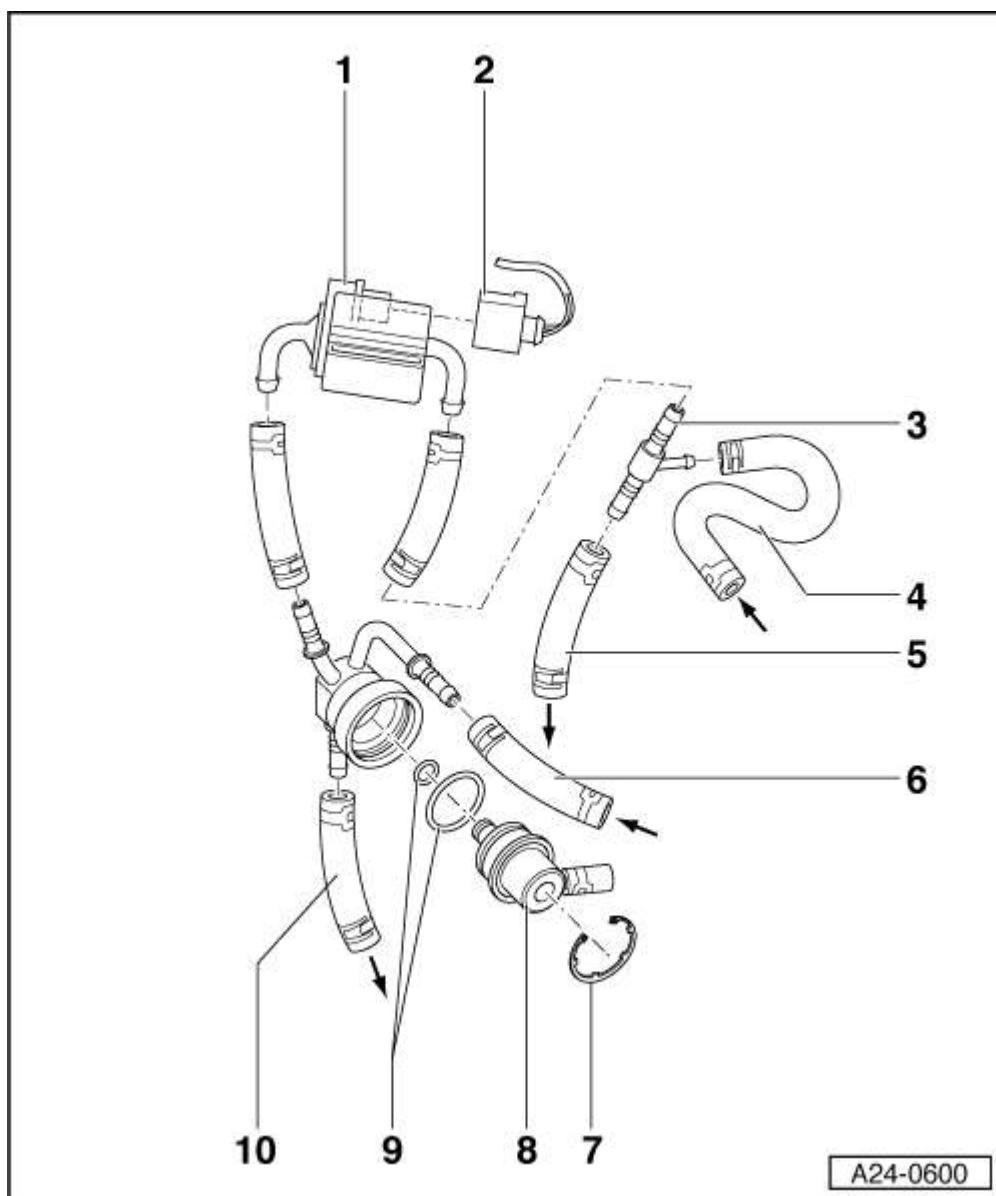
### 8 - Fuel pressure regulator

### 9 - O-ring

- ☐ Renew if damaged

### 10 - Fuel return line

- ☐ To fuel tank
- ☐ Blue marking



- ❑ Secure with spring-type clips
- ❑ Check that it is securely seated