
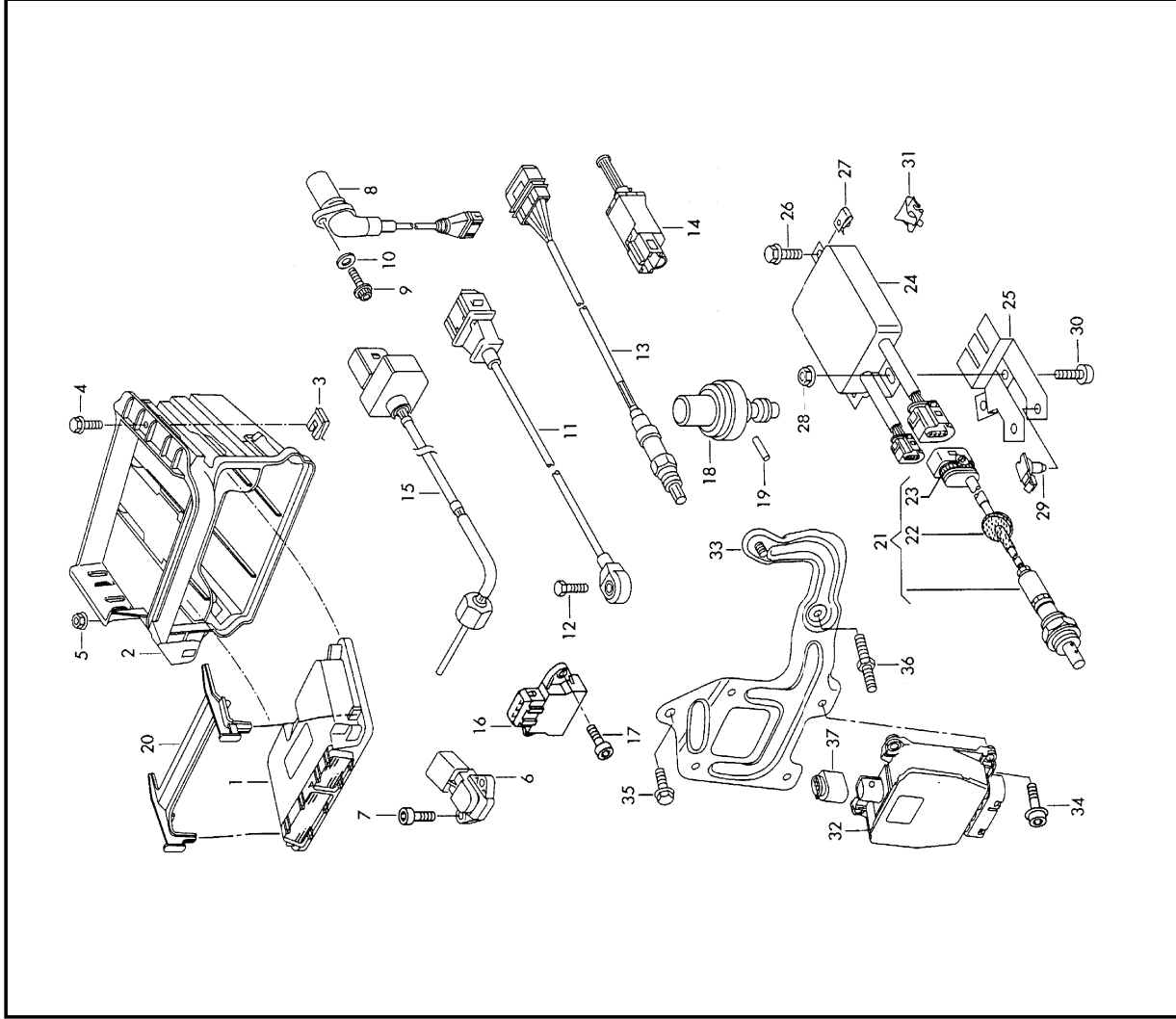


Model	Year	MG	SG	Illustration	Restrictions	UPD	10:51	28.06.2014	 ETKA	
A2	2004	9	06	906-00		0				




Pos	Part Number	Description	Remark	Qty	Model
1	036 906 034 Q	engine control unit impulse sender anti-knock sensor lambda probe * only order electronic * components for immobilizer, * including details of veh- * icle chassis number, for * items which can be fitted * immediately by dealerships -----	'MPI'	1	AUA
(1)	f 036 906 034 EG	engine control unit F 8Z-2-000 001>>	'MPI'	1	PR-0GG+AUA
(1)	036 906 034 EH	engine control unit F 8Z-2-000 001>>	'MPI'	1	PR-0GS+AUA
(1)	036 906 034 CA	engine control unit	'MPI'	1	PR-0GG+BBY
(1)	036 906 034 FE	engine control unit	'MPI'	1	PR-0GS+BBY
(1)	036 906 013 F	engine control unit	'FSI'	1	BAD
(1)	045 906 019 G	control unit for diesel engine F 8Z-3-012 177	'TDI-PD'	1	AMF
(1)	f 045 906 019 AT	control unit for diesel engine F 8Z-3-012 178>>	'TDI-PD'	1	AMF
(1)	f 045 906 019 BA	control unit for diesel engine	'TDI-PD'	1	BHC
(1)	f 045 906 019 F	control unit for diesel engine	'TDI-PD'	1	ATL
(1)	f 045 997 019	control unit for diesel engine F 8Z-3-050 000	'TDI-PD'	1	ANY
(1)	f 045 906 019 BL	control unit for diesel engine F 8Z-4-000 001>>	'TDI-PD'	1	ANY
2	820 907 355	housing for control units		1	
3	+ N 903 562 03	snap nut	M5X17X17	1	
4	N 904 684 02	hexagon head bolt (combi)	PM5X16-B	1	
5	N 904 861 01	hex. nut with washer	M6	1	

Model	Year	MG	SG	Illustration	Restrictions		UPD	10:51	28.06.2014	ETKA	
A2	2004	9	06	906-00			0				



Pos	Part Number	Description	Remark	Qty	Model	Pos	Part Number	Description	Remark	Qty	Model
6		thrust sensor see illustration:	129-30	1	AUA, BBY	(9)	N 101 148 02	allen key head bolt (combi) impulse sender camshaft	M6X15Z1	1	BAD
(6)		thrust sensor see illustration:	133-05	1	BAD						
7		allen key head bolt		1	AUA, BBY	10	+ N 011 524 23	washer	A6, 4X12, 5X1, 6	1	AUA, BBY
(7)		allen key head bolt		2	BAD	11	030 905 377 C	anti-knock sensor		1	
		allen key head bolt				12	+ N 010 244 16	hexagonal head bolt	M8X30	1	
		allen key head bolt				13	b 036 906 265 J	lambda probe (in front of catalyst)		1	AUA, BBY
8	045 957 147 B	impulse sender camshaft		1	AMF, ANY, BHC, ATL	(13)	b 047 906 262	lambda probe (in front of catalyst)		1	BAD
(8)	045 957 147 C	impulse sender crankshaft		1	AMF, ANY, BHC, ATL	(13)	b 036 906 265 H	lambda probe (behind catalyst)		1	AUA, BBY
(8)	036 907 601 D	impulse sender camshaft		1	AUA, BBY	14	1H0 927 189 D	switch		1	manual gearbox
(8)	030 957 147 B	impulse sender crankshaft F >> 82-1-021 000*		1	AUA	15	036 906 088 C	emissions temperature sensor		1	BAD
(8)	030 957 147 AB	impulse sender crankshaft F 82-1-021 001>>*		1	AUA, BBY	16	085 907 386	potentiometer gear selector		1	ANY
(8)	030 907 601 E	impulse sender camshaft		1	BAD			securing parts potentiometer gear selector see illustration:	142-30		
(8)	030 957 147 AA	impulse sender crankshaft		1	BAD	18	6N0 907 597	pressure sensor hydraulic control unit		1	ANY
9	N 101 045 01	12-point head bolt impulse sender crankshaft	M7X18	1	AMF, ANY, BHC, ATL	19		further parts pressure sensor hydraulic control unit see illustration:	142-10		
(9)	N 100 829 07	hexagon head bolt (combi) impulse sender camshaft	M6X16-Z1	1	AMF, ANY, BHC, ATL	20	820 906 037 A	retaining clip engine control unit	'FSI'	1	BAD
(9)	N 014 702 10	allen key head bolt impulse sender camshaft	M6X15	1	AUA, BBY	21	b 820 906 261	emission warning sensor	'NOX'	1	BAD
						22		grommet emission warning sensor not replacement part		1	BAD
						23	N 907 726 01	cable binder - corrugated pipe hole/sheet metal thickness:	5X200 6,5 / 0,6-2	1	BAD

Model		Year	MG	SG	Illustration	Restrictions		UPD	10:51		28.06.2014	 ETKA	
A2		2004	9	06	906-00			0					

Pos	Part Number	Description	Remark	Qty	Model	Pos	Part Number	Description	Remark	Qty	Model
24	036 906 263 C	control unit for emission check	'NOX'	1	BAD						
25	820 906 287	holder for electr. contr. unit	'NOX'	1	BAD						
26	N 904 684 02	hexagon head bolt (combi)	PM5X16-B	1	BAD						
27	+ N 903 562 03	snap nut	M5X17X17	1	BAD						
28	N 904 861 01	hex. nut with washer	M6	2	BAD						
29	N 906 851 01	bracket for connector housing	A6, 5	1	BAD						
30	N 104 128 04	innensechsrund-blechschraube	5X16-R-N	1	BAD						
31	1H0 971 842 F	cable holder heat shield plate for exhaust pipe		1	BAD						
32	6Q0 906 625 A	solenoid valve block		1	BHC						
(32)	6Q0 906 625 C	solenoid valve block		1	ATL						
33	8Z0 906 285 A	retainer solenoid valve block		1	BHC,ATL						
(34)	8Z0 133 589 A	bonded rubber mounting		4	BHC,ATL						
-	N 011 004 4	hexagonal nut bonded rubber mounting	M4	4	BHC,ATL						
-	+ N 011 522 7	washer bonded rubber mounting	A4, 3X9X0,8	4	BHC,ATL						
35	N 100 095 06	hexagon head bolt (combi)	M6X18-S1-L	1	BHC,ATL						
36	N 909 719 01	double stud with hexagon drive	M6X14-M6X14	1	BHC,ATL						
37	1J0 973 713 G	flat contact housing	6 pin grey	1	BHC,ATL						