
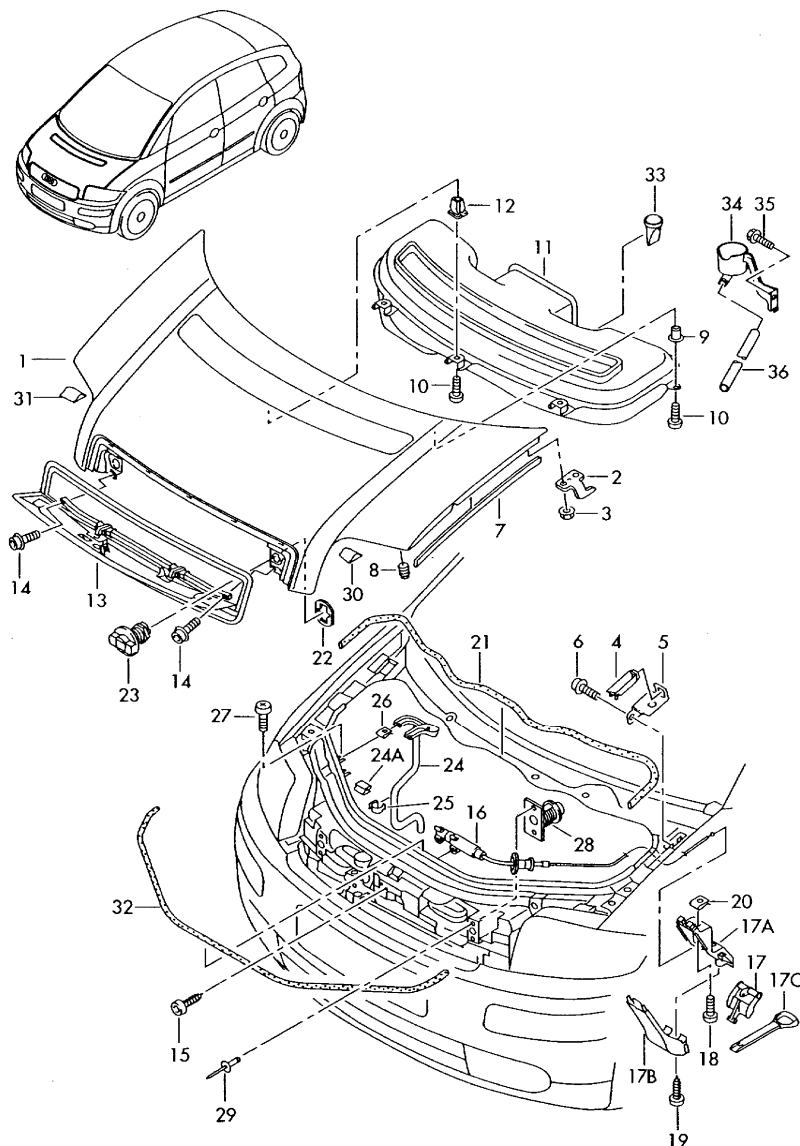


Model	Year	MG	SG	Illustration	Restrictions	UPD	16:32	29.04.2012	 ETKA
A2	2003	8	23	823-10		908			



Pos	Part Number	Description	Remark	Qty	Model
		lid	front		
4	8Z0 823 417 A	guide support	left	1	
		also use:	>>8Z-1-010000 8Z0 823 405 C	1	
(4)	8Z0 823 417 A	guide support	right	1	
		also use:	>>8Z-1-010000 8Z0 823 406 C	1	
5	8Z0 823 405 C	support	left	1	
		also use:	>>8Z-1-010000 8Z0 823 417 A	1	
(5)	8Z0 823 406 C	support	right	1	
		also use:	>>8Z-1-010000 8Z0 823 417 A	1	
6	N 907 559 01	socket head bolt with inner multipoint head (kombi)	M8X25	4	
7	535 853 879 A	edge protection	left, right shorten to: 35MM	2	
8	4B0 823 481	stop buffer	front	2	
9	N 909 275 01	spreader rivet	8X3,5	3	
9A	N 105 520 01	spreader rivet	8X15	2	
10	N 103 546 02	hexagon socket head panel bolt	5X16	3	
11		fresh air box	see illustration: 819-30		
12	N 909 946 01	expanding nut	4,8X10	3	
13		radiator grille, complete	see illustration: 853-30		
14	N 100 801 02	socket head bolt with hexagon socket head (combination) F >> 8Z-4-010 000*	M6X25 front	2	
(14)	N 909 607 01	semi round bolt (combi) with hexagon socket head F 8Z-4-010 001>>*	M5X16 rear	2	
15	N 907 750 01	hexagon socket head panel bolt	4,8X16	2	
16	8Z1 823 531 B	lid lock cable	1380MM	1	lhd
(16)	8Z2 823 531 C	lid lock cable	2600MM	1	rhd