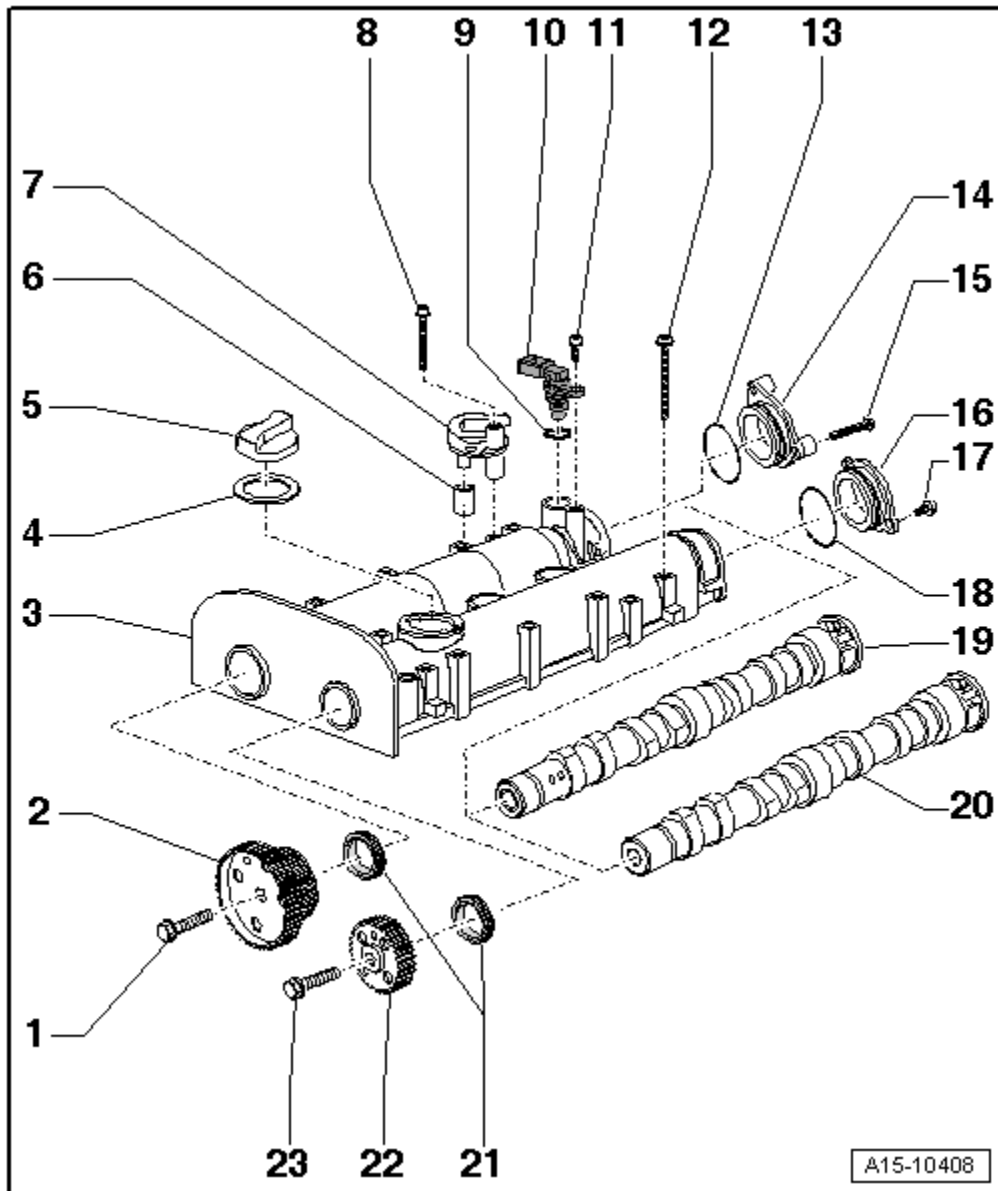


Camshaft housing - exploded view



1 - Bolt

q Renew

q 20 Nm + turn 90° further

2 - Inlet camshaft sprocket

q Removing and installing → [Chapter](#)

3 - Camshaft housing

q With integrated camshaft bearings

q Removing and installing → [Chapter](#)

q Remove old sealant residues

q Carefully clean sealing surfaces; they must be free of oil and grease

q Coat with sealant before installing; for sealant refer to → [Electronic parts catalogue](#)

q Installing: fit vertically from above onto studs and dowel pins

4 - Seal

- q Renew if damaged
- 5 - Filler cap
- 6 - Hose
- q Only for engine code BBY
- 7 - Non-return valve
- q Only for engine code BBY
- 8 - Bolt
- q Tightening torque → [Rep. gr.24](#)
- 9 - O-ring
- q Renew
- 10 - Hall sender -G40-
- 11 - Bolt
- q 10 Nm
- 12 - Bolt
- q Renew
- q Note correct sequence when loosening → [Anchor](#)
- q Tightening torque and sequence → [Fig.](#)
- 13 - O-ring
- q Renew
- 14 - Sealing cap
- 15 - Bolt
- q 10 Nm
- 16 - Sealing cap
- 17 - Bolt
- q 10 Nm
- 18 - O-ring
- q Renew
- 19 - Inlet camshaft
- q With cam for high-pressure pump
- q Before removing, detach roller tappet for high-pressure pump
- q Checking axial clearance → [Chapter](#)
- q Removing and installing → [Chapter](#)
- q Lubricate with oil before installing (also lubricate collar of axial bearing)
- 20 - Exhaust camshaft
- q Checking axial clearance → [Chapter](#)
- q Removing and installing → [Chapter](#)
- q Lubricate with oil before installing (also lubricate collar of axial bearing)
- 21 - Oil seals
- q Renewing → [Chapter](#)
- 22 - Exhaust camshaft sprocket
- q Removing and installing → [Chapter](#)

23 - Bolt

q Renew

q 20 Nm + turn 90° further

Camshaft housing - tightening torque and sequence

- Renew camshaft housing bolts.
- Tighten bolts in the sequence - 1 ... 15- in 2 stages as follows:
 1. Tighten to 10 Nm.
 2. Turn 90° further.

