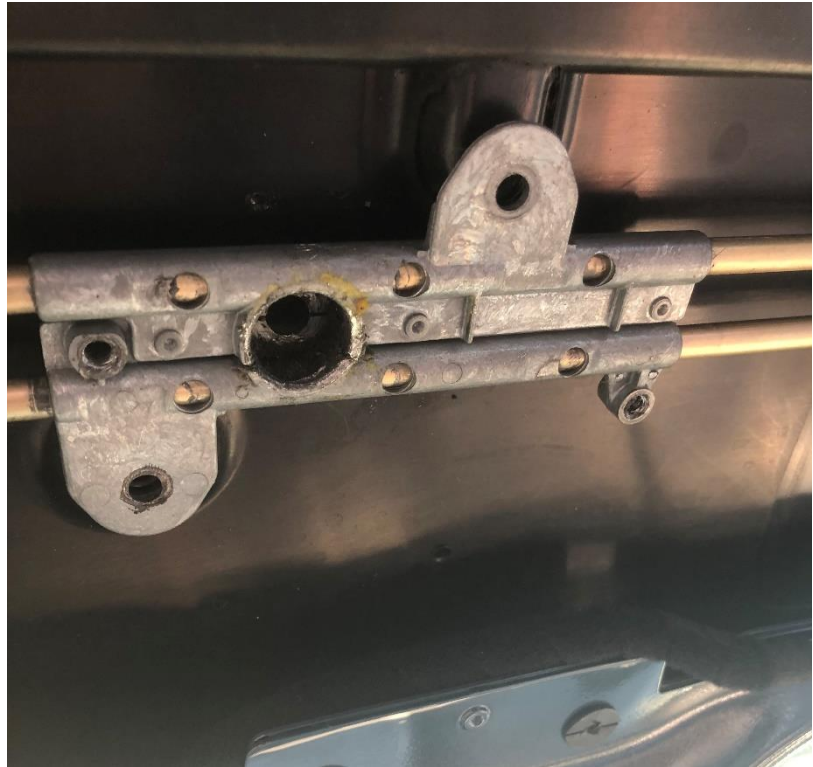


## Replacing OEM Motor Mount with Depronman Motor Mount

Tools required: Dremel with a 38mm metal cutting disc, pipe grips and metal trim tool.

Before starting this process, the roof should be fully opened.

This is the original motor mount, as seen once the head lining and motor are removed.



Using a metal trim tool or similar, prize the two cast metal pieces apart. If they do not part, then use a 4mm drill to remove the three rivets.

## Replacing OEM Motor Mount with Depronman Motor Mount

For the next step, use grips to pull the plastic guide tube from the bronze coloured tube. If this is not immediately possible, make a small slit with a sharp knife in the end of the plastic guide tube.

**This step is only possible with the roof open as the cables need to be fully retracted inside the bronze coloured tube.**



This will allow one side of the motor mount to be moved away from the roof, as seen below.

## Replacing OEM Motor Mount with Depronman Motor Mount

Next, use a wedge under the bronze tube, such as the piece of wood shown and cut a slit in the length of the casting of the motor mount.

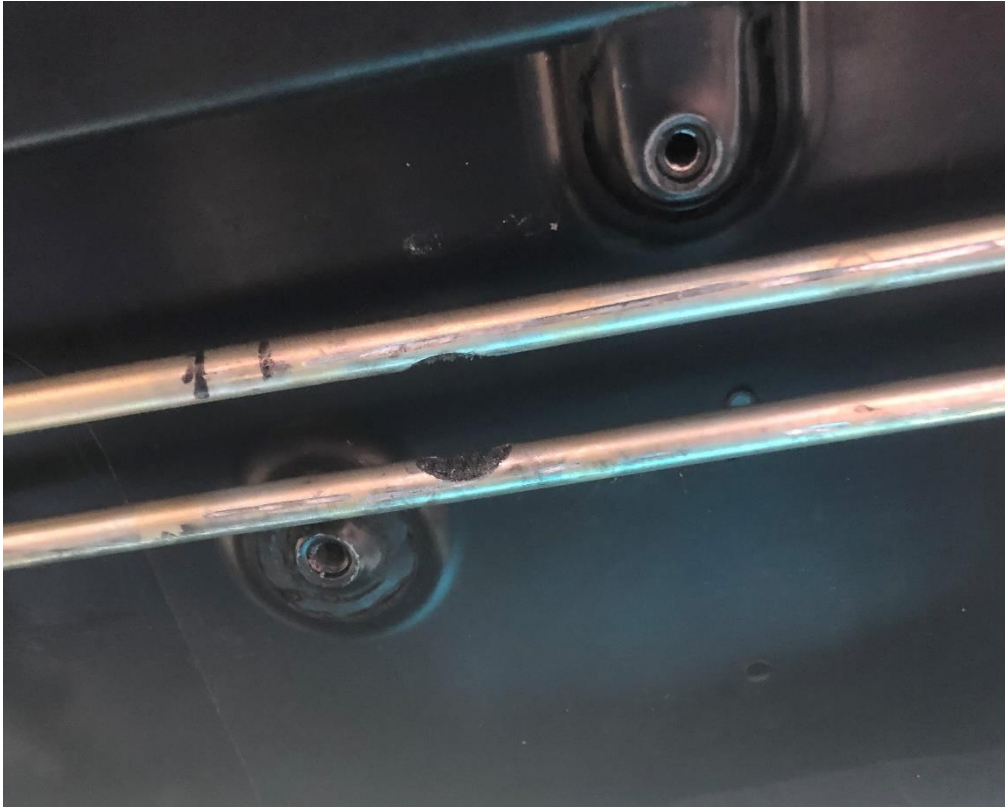


With a sharp grinding disc in a Dremel, the cutting will happen relatively fast, be careful not to cut into the bronze coloured tube, as this could damage the cables inside.

**It will be apparent that you are cutting into the tube, as sparks will start to fly out of the cutting area. When this happens, you have cut through the cast aluminium, as desired.**

## Replacing OEM Motor Mount with Depronman Motor Mount

Repeat the above process for the second half of the cast aluminium motor mount until you get to this stage:



After removing the original motor mount, the new one should be fitted as seen here. Make sure all the countersunk Allen bolts are tight, when they are, the mount pieces should touch, and the tubes should be tightly clamped within the mount. Screw the short, non-countersunk Allen bolt into the hole shown in the bottom left of this photograph.



## Replacing OEM Motor Mount with Depronman Motor Mount

Screw the last remaining Allen bolt through the motor, and into the rear-most hole of the motor mount, as shown.

Then, screw the two T25 torx screws from the original motor mount into the remaining two holes of the motor, and into the mount.

