

Camshaft housing - exploded view

1 - Bolt

- ☐ Renew
- ☐ 20 Nm + turn 90° further

2 - Inlet camshaft sprocket

- ☐ Removing and installing
→ [Chapter](#)

3 - Camshaft housing

- ☐ With integrated camshaft bearings
- ☐ Removing and installing
→ [Chapter](#)
- ☐ Remove old sealant residues
- ☐ Carefully clean sealing surfaces; they must be free of oil and grease
- ☐ Coat with sealant before installing; for sealant refer to

→ [Electronic parts catalogue](#)

- ☐ Installing: fit vertically from above onto studs and dowel pins

4 - Seal

- ☐ Renew if damaged

5 - Filler cap

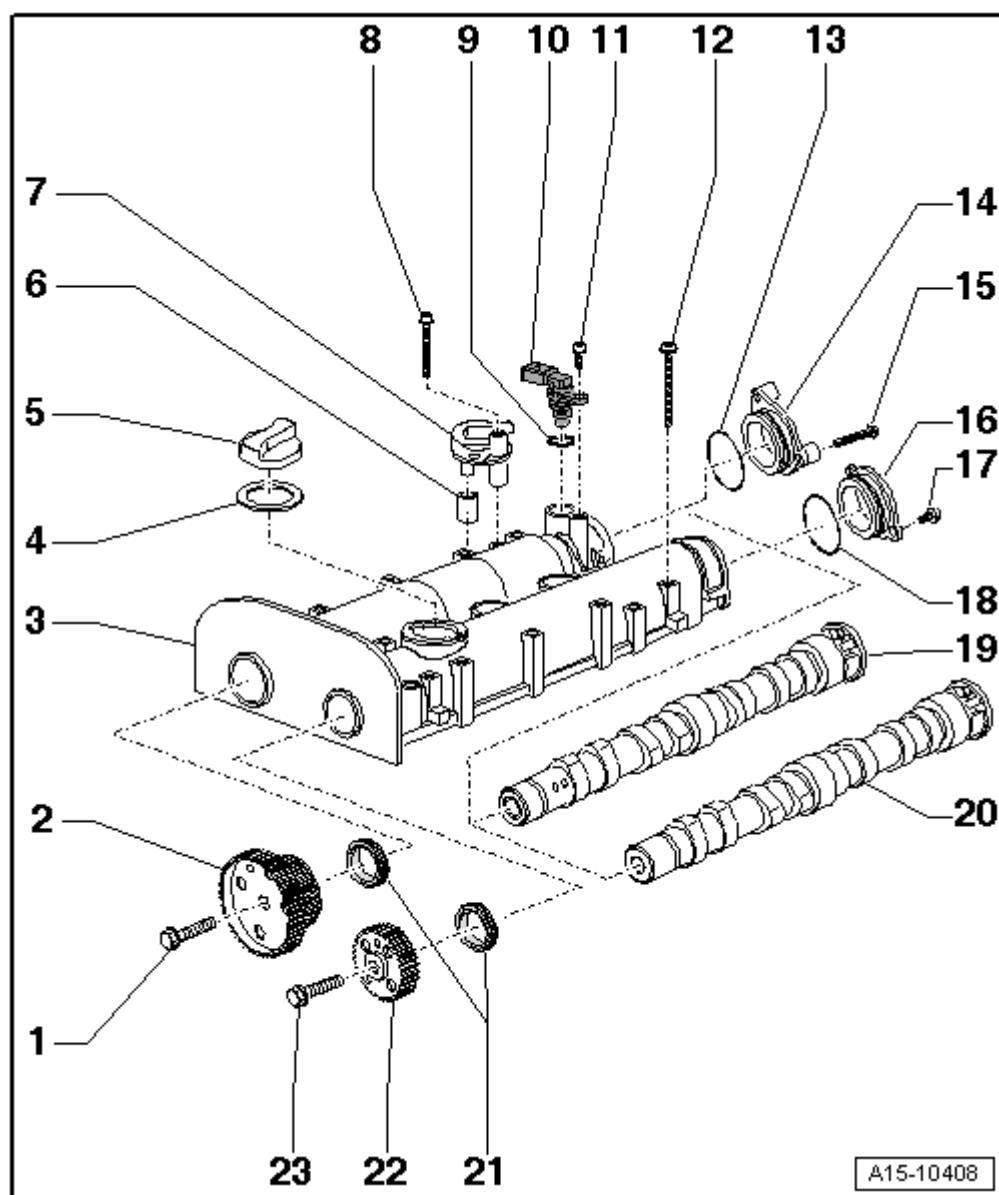
6 - Hose

- ☐ Only for engine code BBY

7 - Non-return valve

- ☐ Only for engine code BBY

8 - Bolt



- ❑ Tightening torque → [Rep. gr.24](#)

9 - O-ring

- ❑ Renew

10 - Hall sender -G40-**11 - Bolt**

- ❑ 10 Nm

12 - Bolt

- ❑ Renew
- ❑ Note correct sequence when loosening → [Anchor](#)
- ❑ Tightening torque and sequence → [Fig.](#)

13 - O-ring

- ❑ Renew

14 - Sealing cap**15 - Bolt**

- ❑ 10 Nm

16 - Sealing cap**17 - Bolt**

- ❑ 10 Nm

18 - O-ring

- ❑ Renew

19 - Inlet camshaft

- ❑ With cam for high-pressure pump
- ❑ Before removing, detach roller tappet for high-pressure pump
- ❑ Checking axial clearance → [Chapter](#)
- ❑ Removing and installing → [Chapter](#)
- ❑ Lubricate with oil before installing (also lubricate collar of axial bearing)

20 - Exhaust camshaft

- ❑ Checking axial clearance → [Chapter](#)
- ❑ Removing and installing → [Chapter](#)
- ❑ Lubricate with oil before installing (also lubricate collar of axial bearing)

21 - Oil seals

- ❑ Renewing → [Chapter](#)

22 - Exhaust camshaft sprocket

- ❑ Removing and installing → [Chapter](#)

23 - Bolt

- ❑ Renew
- ❑ 20 Nm + turn 90° further

Camshaft housing - tightening torque and sequence

- Renew camshaft housing bolts.

- Tighten bolts in the sequence -1 ... 15- in 2 stages as follows:

1. Tighten to 10 Nm.
2. Turn 90° further.

